



Math Virtual Learning

Geometry

Wednesday, April 22th



Grade/Course
Lesson: April 22th, 2020

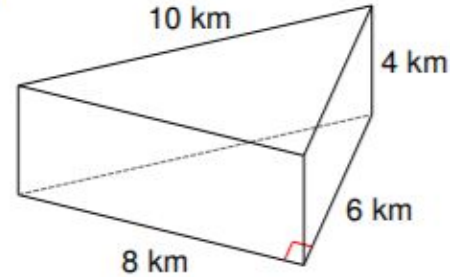
Objective/Learning Target:

Students will calculate the surface area of pyramids.

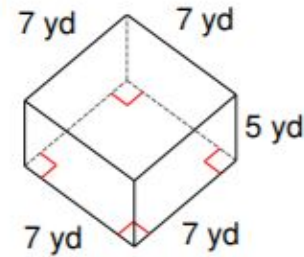
Warm-Up

Find the surface area of the following:

7)

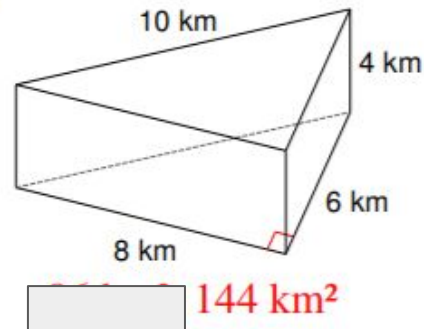


9)

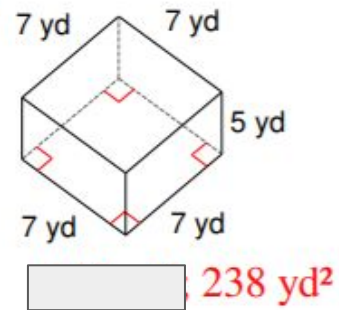


Warm-Up Answers

7)

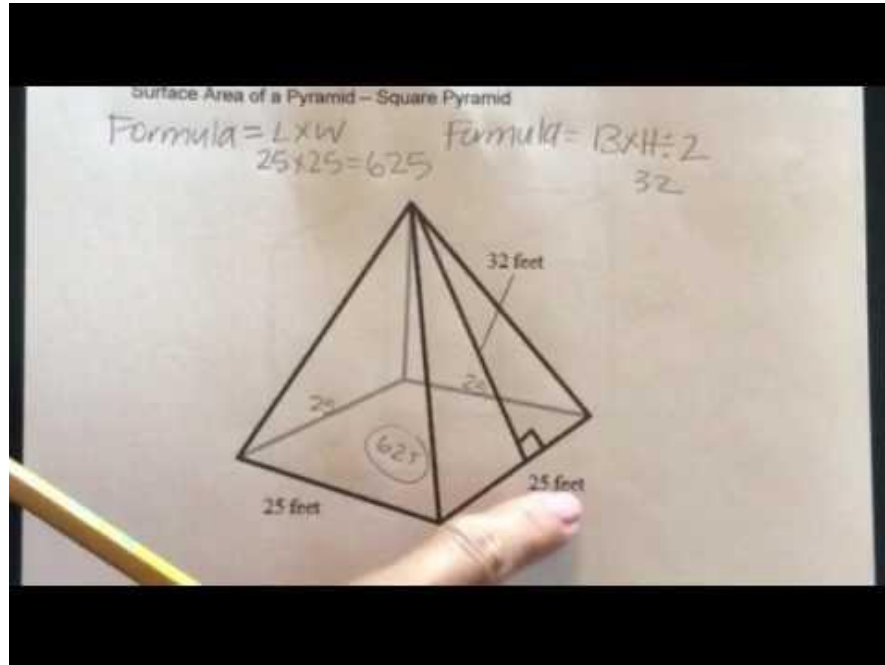


9)

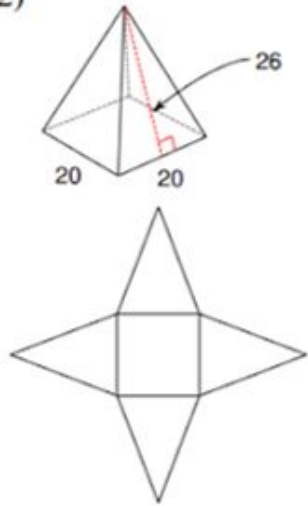


Learn

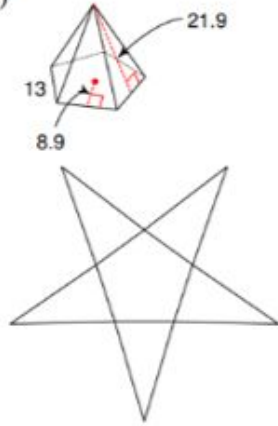
Watch the video on finding the surface area of a square pyramid.



2)

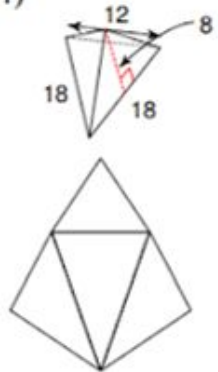


3)

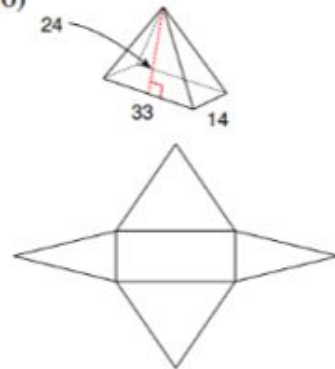


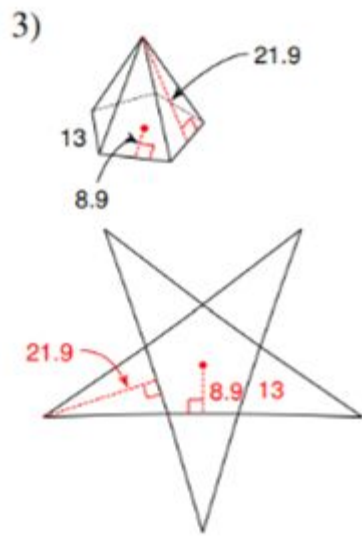
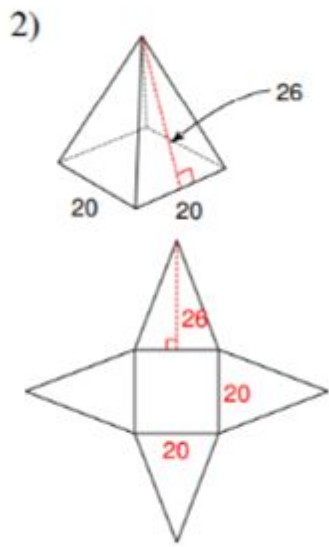
Practice

4)

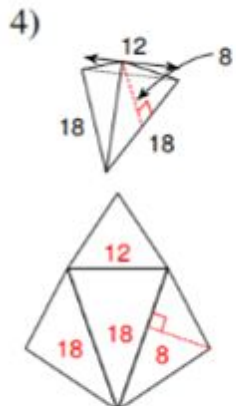


6)



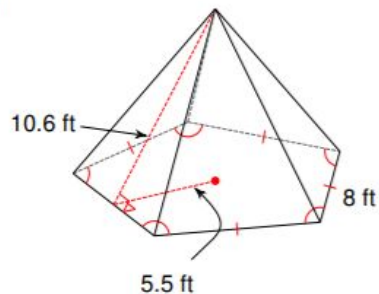


Answers

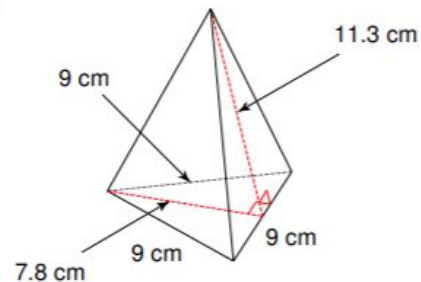


Find the lateral area and surface area of each figure. Round your answers to the nearest tenth, if necessary.

7)

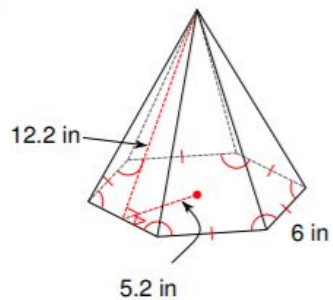


8)

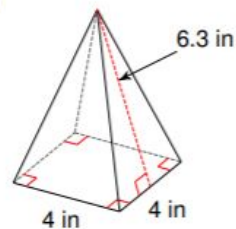


Practice

9)

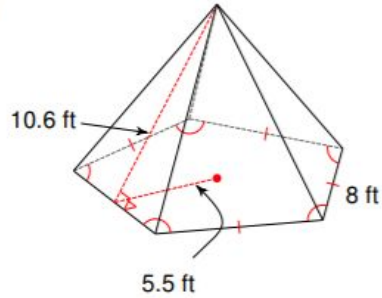


10)



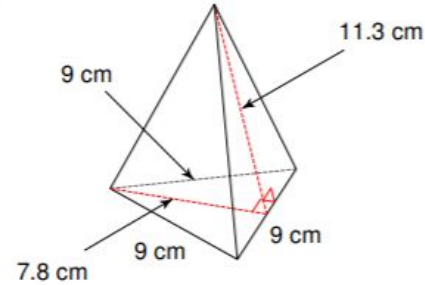
Find the lateral area and surface area of each figure. Round your answers to the nearest tenth, if necessary.

7)



212 ft²; 322 ft²

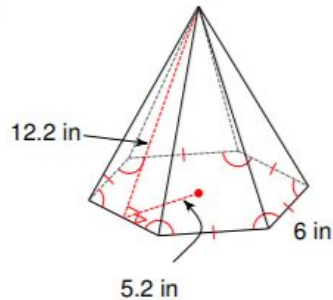
8)



152.6 cm²; 187.7 cm²

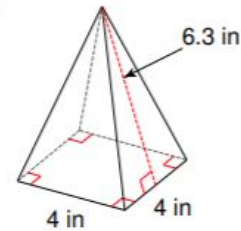
Answers

9)



219.6 in²; 313.2 in²

10)



50.4 in²; 66.4 in²